

## Lasso Select

### Access:

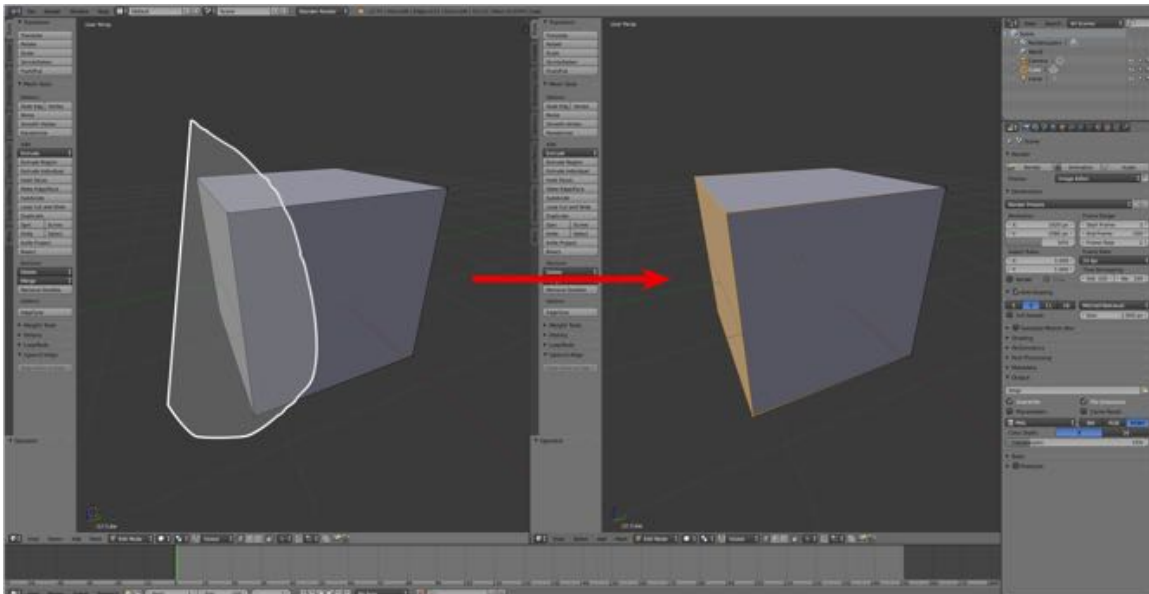
Keyboard shortcut: **CTRL + LMB Drag**

Mode: 3D Editor: Object Mode  
3D Editor: Edit Mode

Panel: None

Menu: None

### Description:



316

The Lasso Select Tool is activated by holding down the CTRL-KEY, then LMB dragging the mouse cursor. The Lasso appears as a circular shape around the selection. Additional selections can be added by repeating the process (holding down the CTRL-KEY then LMB dragging the mouse cursor).

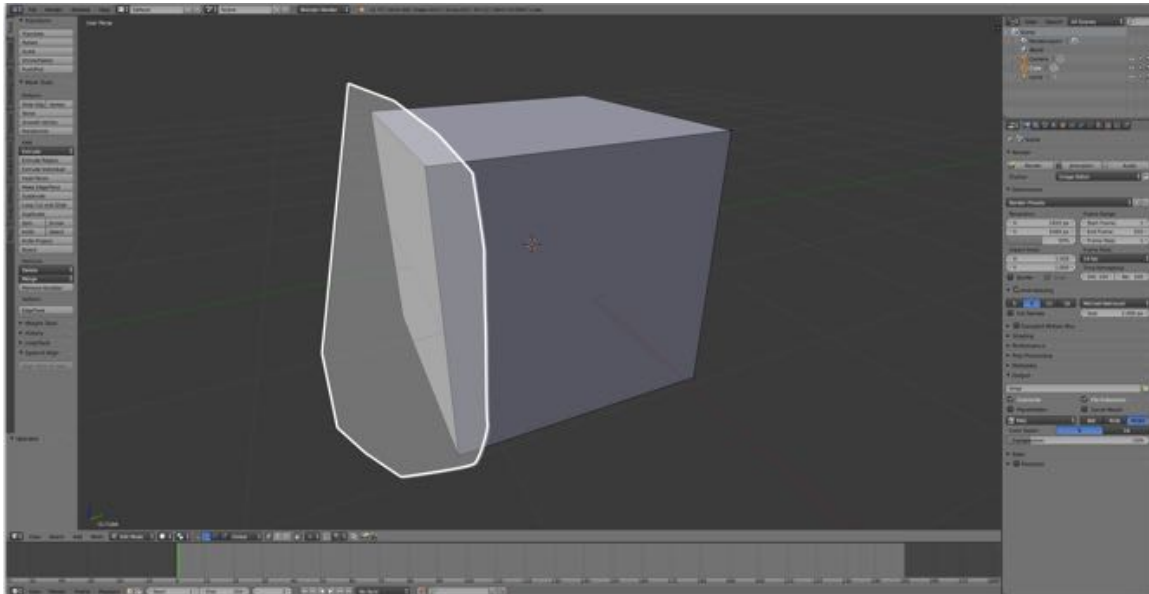
To deselect, use Ctrl-Shift-LMB while dragging.

### To Use the Tool:

- **Switch** to the 3D Editor's **Edit Mode**.
- **Hold** down the **CTRL-KEY**, then **LMB drag** the mouse cursor over the elements to be selected.

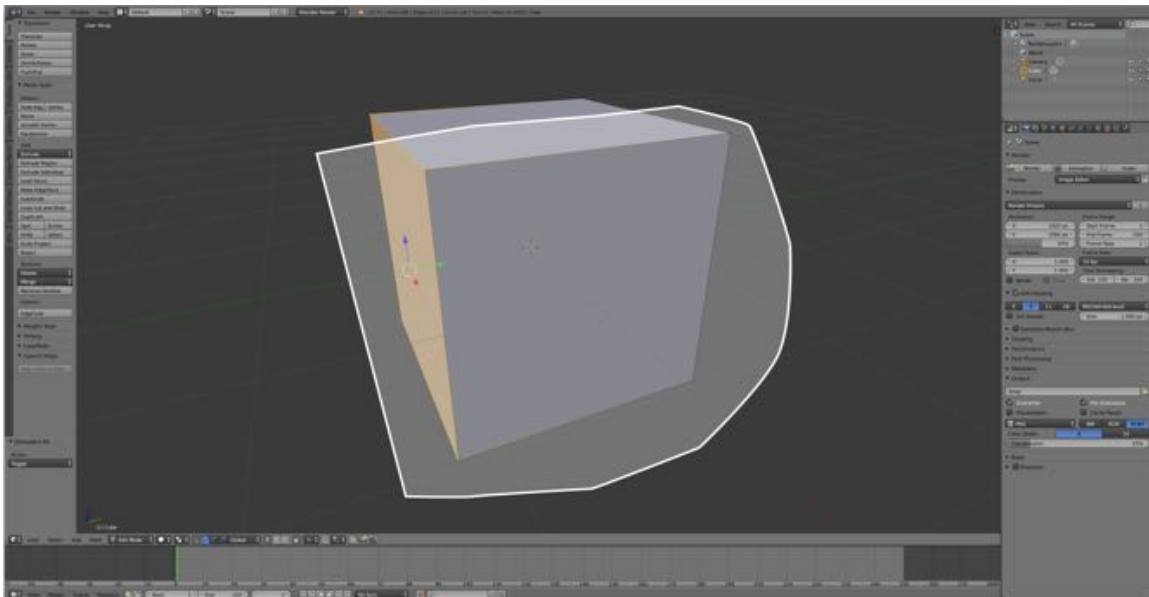
## Let's Try It:

- **Open Blender** and switch to the 3D Editor's **Edit Mode** and **Edge Selection Mode**.
- **Hold** down the **CTRL-KEY** and **LMB drag** the mouse cursor over **edges** of the **right face** of the Default Cube.

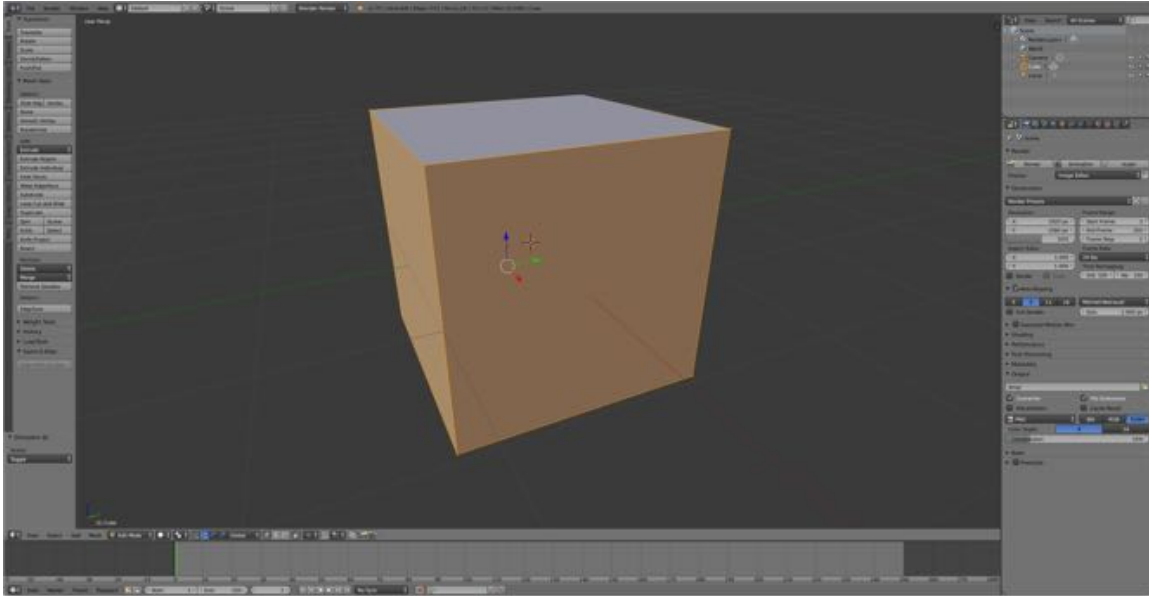


317

- **Hold** down the **CTRL-KEY** and **LMB drag** the mouse cursor over **edges** of the **front face** of the cube.



318



319

### **Additional Comments:**

I rarely use this tool preferring to use the Border Select Tool and the Circle Select Tool instead.

### **For More Information:**

Blender Reference Manual, **Basic Selection**

<https://www.blender.org/manual/modeling/meshes/selecting/basics.html?highlight=lasso>