

## Delete Edge Loop

### Access:

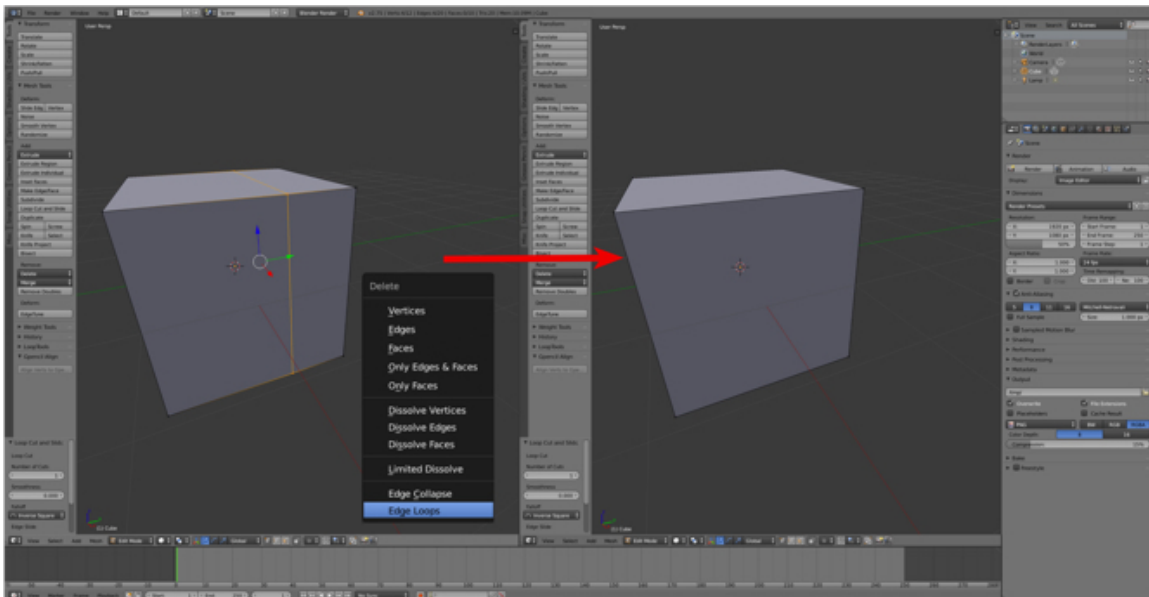
Keyboard shortcut: **X-KEY > Edge Loop**

Mode: 3D Editor: Edit Mode

Panel: Tool Shelf > Tools Tab > Remove > Delete > Edge Loop

Menu: Mesh > Delete > Edge Loop

### Description:



240

Part of the Delete Tool, Delete Edge Loop allows you to delete a selected edge loop if it is between two other edge loops.

### To Use the Tool:

- **Switch** to the 3D Editor's **Edit Mode**.
- **Select (CTRL + RMB)** the edge loop.
- **Press X-KEY > select Edge Loop**.

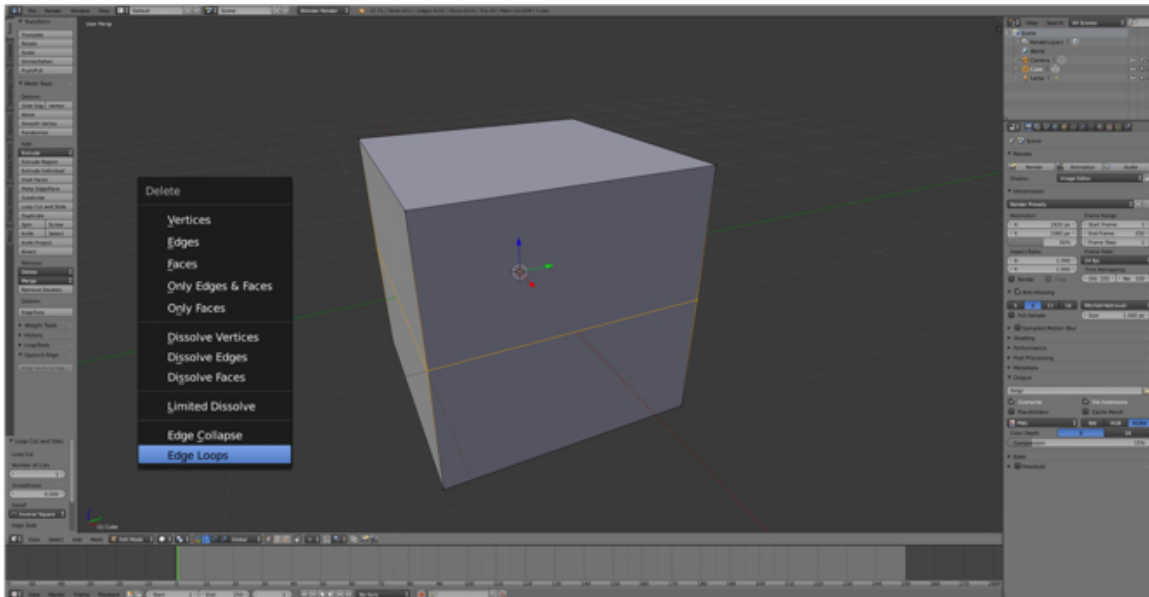
## Let's Try It:

### Setup

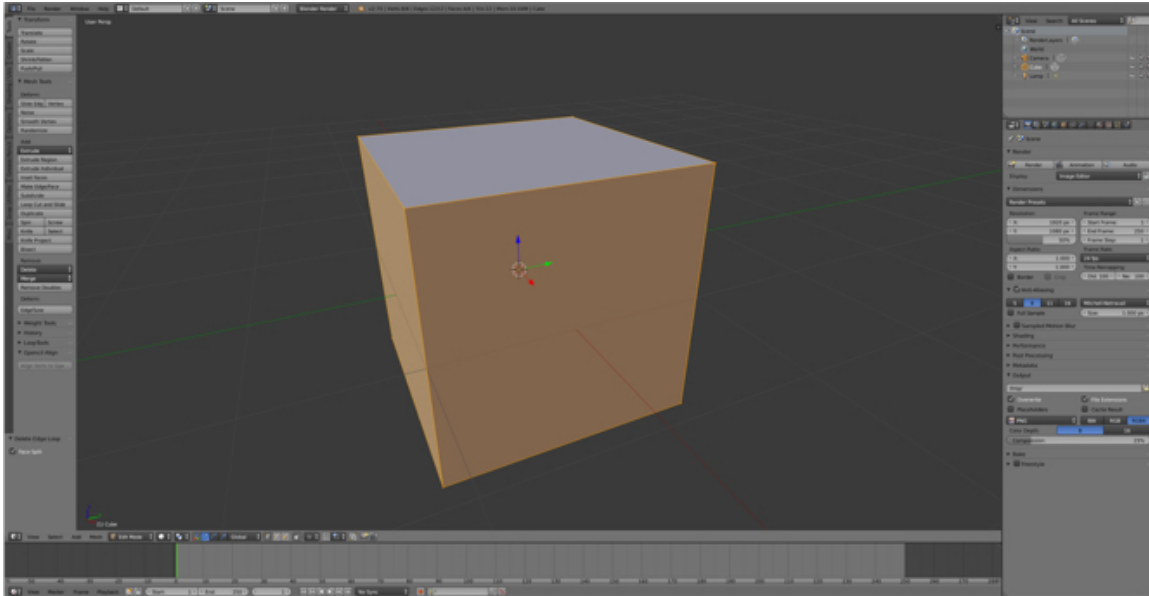
- **Open Blender** and switch to **Edit Mode**.
- Press **CTRL + R-KEY** and **hover** the mouse **cursor** over the default cube until a magenta line appears.
- **LMB** click to **place** an edge loop.
- **LMB** click to **confirm**.

### End of Setup

- **Select (CTRL + RMB)** the new **edge loop**.



- Press **X-KEY** > select **Edge Loop**.



242

### **Additional Comments:**

Deleting an edge loop merges the surrounding faces together to preserve the surface of the mesh.

### **For More Information:**

Blender Reference manual, **Delete Edge Loop**

<https://www.blender.org/manual/modeling/meshes/editing/edges.html#delete-edge-loop>